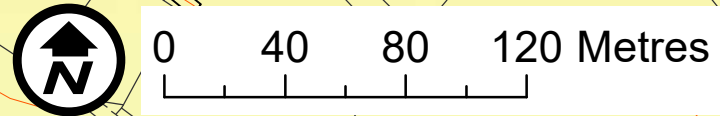


**Perranuthnoe Parish  
Settlement Edge Map  
Goldsithney Edge of  
Settlement Assessment  
Map 11 - Overview**



Settlement edge visually prominent due to topography and lack of trees in hedges.

Lower lying land sheltered by topography and hedge vegetation.

Important historic field pattern and hedge trees retained.

Ground rising to A394 where undulating land is rising to meet the plateau.

Highest ground most visually prominent.

**Key**

- Perranuthnoe Parish
- Settlement Edge
- Village settlement beyond Parish boundary
- View Point - refer to photographic record
- Land covered by historic Penwith Protected Land Area, designation not within Cornwall Local Plan
- Important hedge boundary
- Intact historic field pattern
- Historic field pattern now removed
- Contour Line

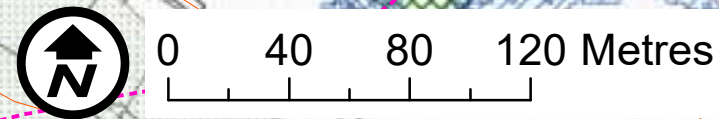
**Landscape Type**

- Undulating Land
- Coastal Plateau



**Perranuthnoe Parish  
Settlement Edge Map  
Goldsithney Edge of  
Settlement Assessment  
Map 11.1 - Constraints 1**

© Crown copyright and database rights 2021 Ordnance Survey 100049047. 17\_021



**Key**

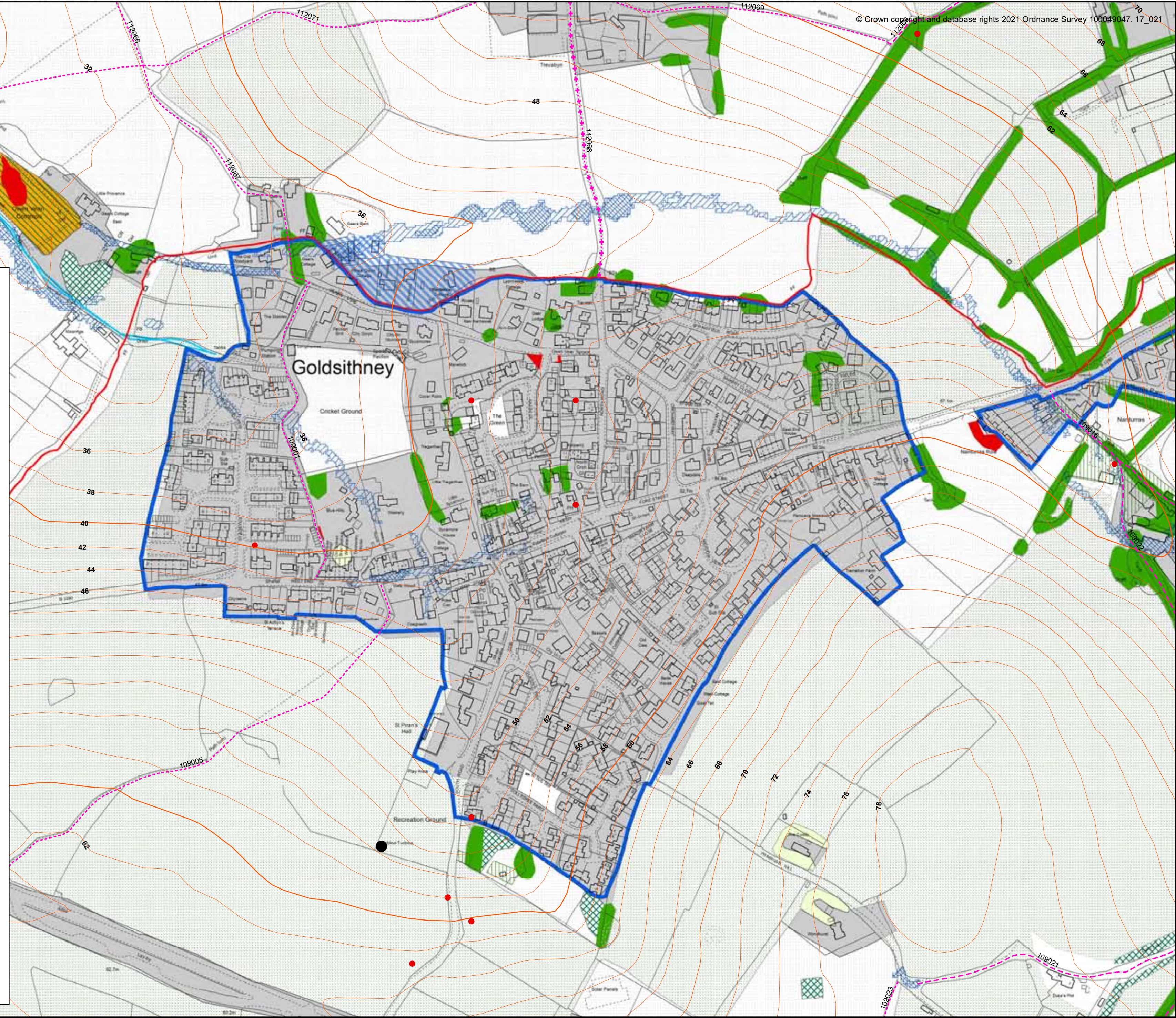
- Perranuthnoe Parish
- Settlement Edge
- Village settlement beyond Parish boundary
- Contour Line
- Wind turbine position
- Tree Preservation Orders
- Japanese knotweed surveyed
- Cornish Rivers/detailed river network
- Updated flood map for surface water 1 in 30 year
- Updated flood map for surface water 1 in 100 year

**Public Rights of Way**

- Footpath
- Bridleway
- By-way

**ERCCIS 2005**

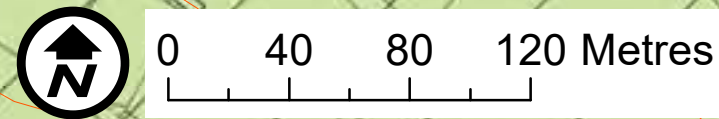
- Arable
- Broad-leaved Woodland
- Residential
- Coniferous Woodland
- Improved Grassland
- scattered Scrub on Improved Grassland
- scattered Scrub on possibly Unimproved Grassland
- Scrub





**Perranuthnoe Parish  
Settlement Edge Map  
Goldsithney Edge of  
Settlement Assessment  
Map 11.2 - Constraints 2**

© Crown copyright and database rights 2021 Ordnance Survey 100049047\_17\_021

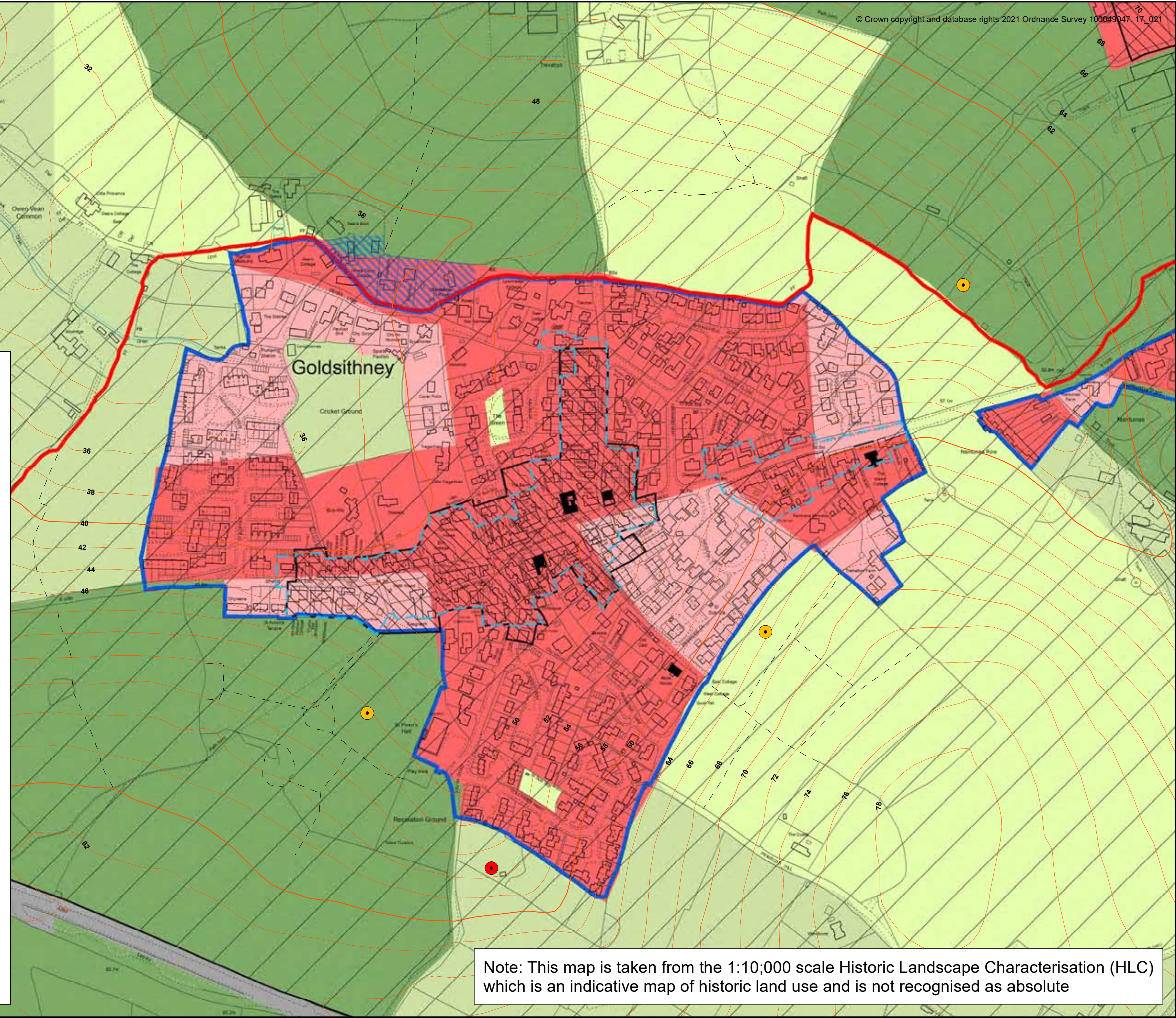


**Key**

- Perranuthnoe Parish
- Contour Line
- World Heritage Site
- Settlement Edge
- Village settlement beyond Parish boundary
- Engine Houses
- Mines
- 1875-1901 settlement boundary
- Conservation areas
- Listed Buildings
- Historic field pattern

**Historic Landscape Characterisation**

- Communications
- Farmland: Medieval
- Post-medieval Enclosed Land
- Modern Enclosed Land
- Settlement: C20
- C20 and C21 Settlement



Note: This map is taken from the 1:10,000 scale Historic Landscape Characterisation (HLC) which is an indicative map of historic land use and is not recognised as absolute



Perranuthnoe Parish  
Settlement Edge Map  
Goldsithney Edge of  
Settlement Assessment  
Map 11.3 - 1875-1901 map

