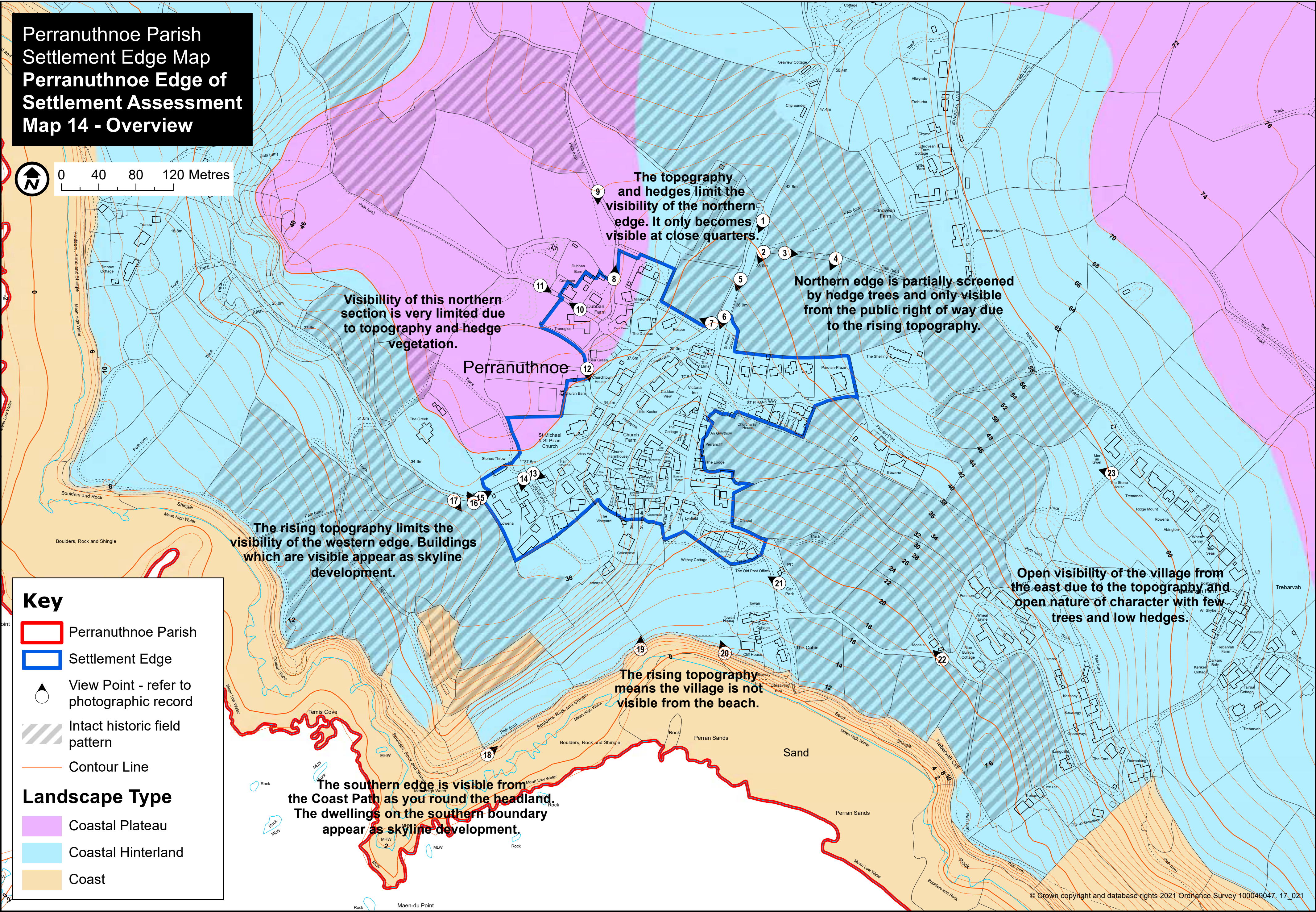
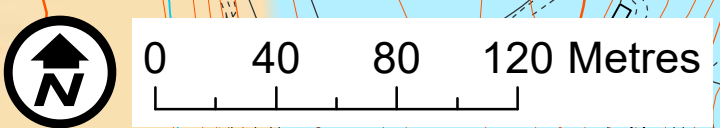


**Perranuthnoe Parish  
Settlement Edge Map  
Perranuthnoe Edge of  
Settlement Assessment  
Map 14 - Overview**



The topography and hedges limit the visibility of the northern edge. It only becomes visible at close quarters.

Northern edge is partially screened by hedge trees and only visible from the public right of way due to the rising topography.

Visibility of this northern section is very limited due to topography and hedge vegetation.

The rising topography limits the visibility of the western edge. Buildings which are visible appear as skyline development.

Open visibility of the village from the east due to the topography and open nature of character with few trees and low hedges.

The rising topography means the village is not visible from the beach.

The southern edge is visible from the Coast Path as you round the headland. The dwellings on the southern boundary appear as skyline development.

**Key**

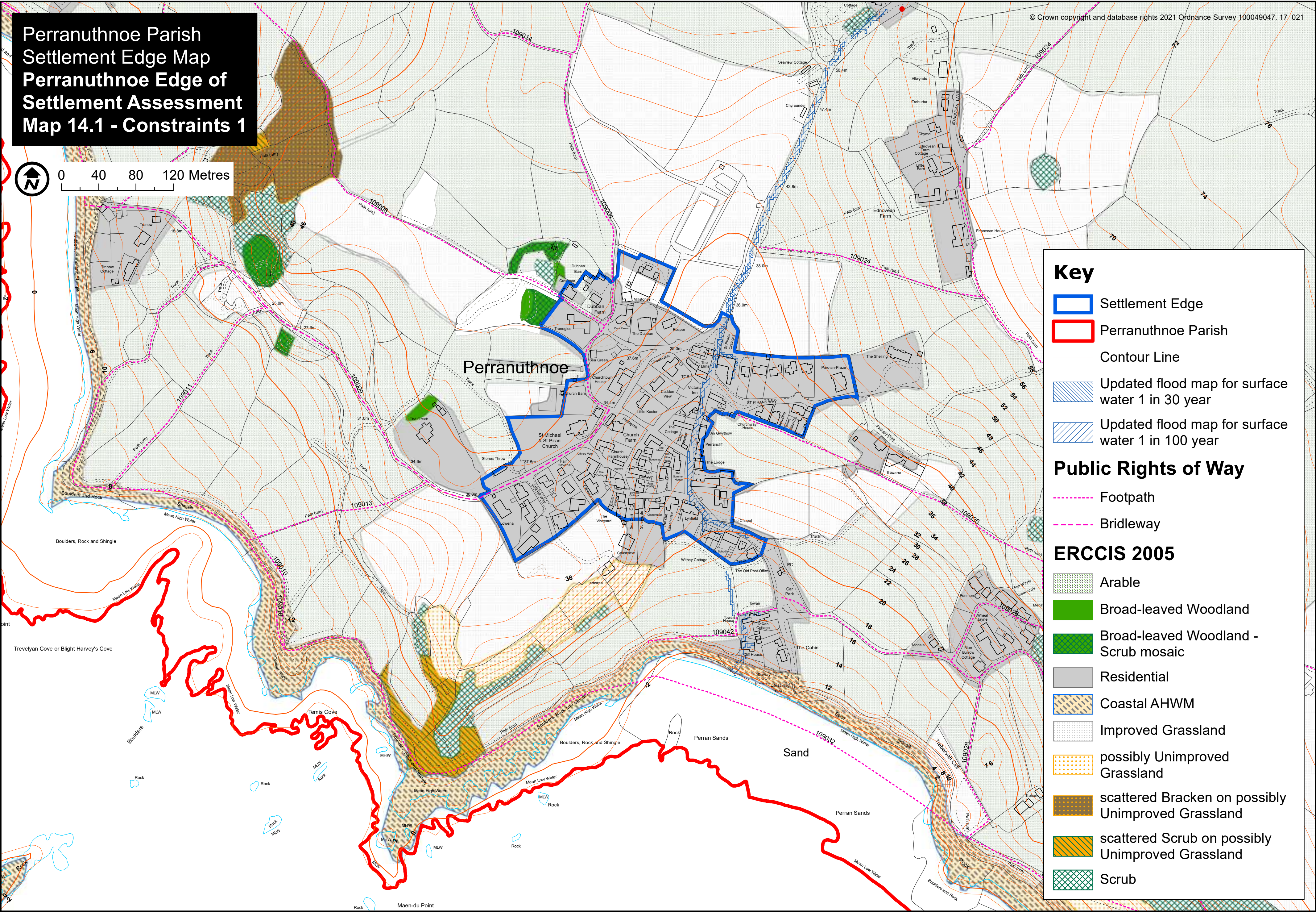
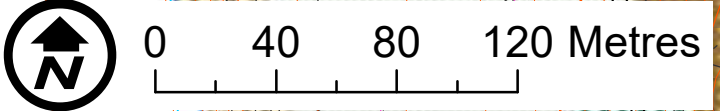
- Perranuthnoe Parish
- Settlement Edge
- View Point - refer to photographic record
- Intact historic field pattern
- Contour Line

**Landscape Type**

- Coastal Plateau
- Coastal Hinterland
- Coast



**Perranuthnoe Parish  
Settlement Edge Map  
Perranuthnoe Edge of  
Settlement Assessment  
Map 14.1 - Constraints 1**



**Key**

- Settlement Edge
- Perranuthnoe Parish
- Contour Line
- Updated flood map for surface water 1 in 30 year
- Updated flood map for surface water 1 in 100 year

**Public Rights of Way**

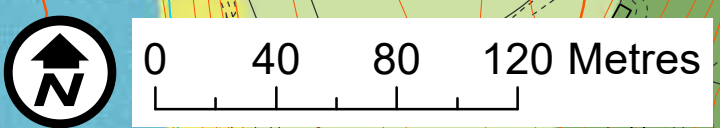
- Footpath
- Bridleway

**ERCCIS 2005**

- Arable
- Broad-leaved Woodland
- Broad-leaved Woodland - Scrub mosaic
- Residential
- Coastal AHWM
- Improved Grassland
- possibly Unimproved Grassland
- scattered Bracken on possibly Unimproved Grassland
- scattered Scrub on possibly Unimproved Grassland
- Scrub



# Perranuthnoe Parish Settlement Edge Map Perranuthnoe Edge of Settlement Assessment Map 14.2 - Constraints 2

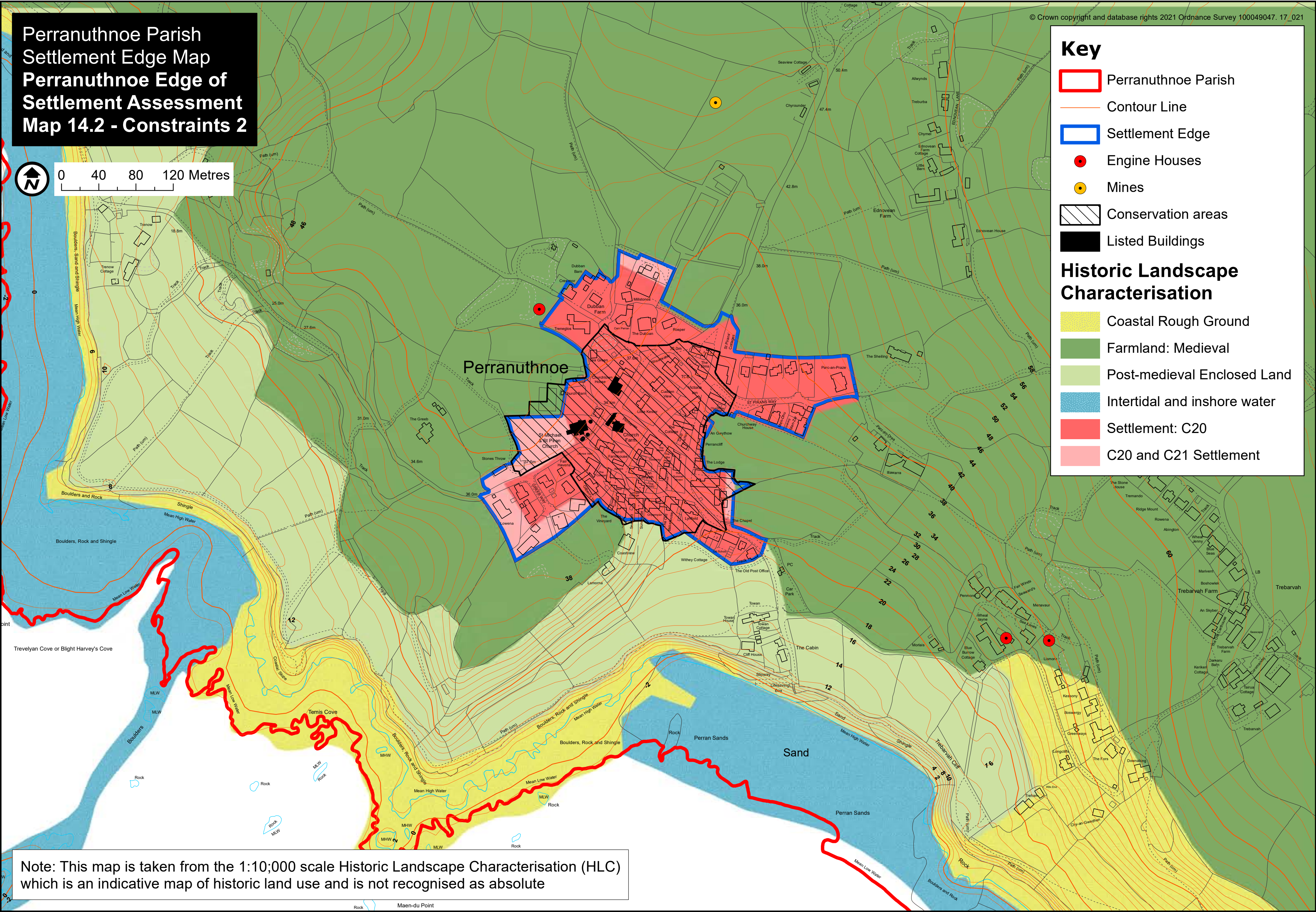


### Key

- Perranuthnoe Parish
- Contour Line
- Settlement Edge
- Engine Houses
- Mines
- Conservation areas
- Listed Buildings

### Historic Landscape Characterisation

- Coastal Rough Ground
- Farmland: Medieval
- Post-medieval Enclosed Land
- Intertidal and inshore water
- Settlement: C20
- C20 and C21 Settlement



Note: This map is taken from the 1:10,000 scale Historic Landscape Characterisation (HLC) which is an indicative map of historic land use and is not recognised as absolute



Perranuthnoe Parish  
Settlement Edge Map  
Perranuthnoe Edge of  
Settlement Assessment  
Map 14.3 - 1875-1901 map

